



### BirdBike Assembly Video

Scan to watch our easy-to-install video



### Need help? We're here for you.

Please reach out to us directly with any questions, concerns or if you need help assembling the Bird Bike. Please do not contact the retailer.

Visit [support.bird.co](http://support.bird.co)  
Call 1-888-309-3702  
Email [BirdBike@bird.co](mailto:BirdBike@bird.co)

# Quick Start Guide

BirdBike

A-FRAME  
V-FRAME

## 3 Remove the dash display

Removing the screw from under LED display

- 1 Gently pull the LED display out from its enclosure within the handlebar. Be careful not to damage any cables.

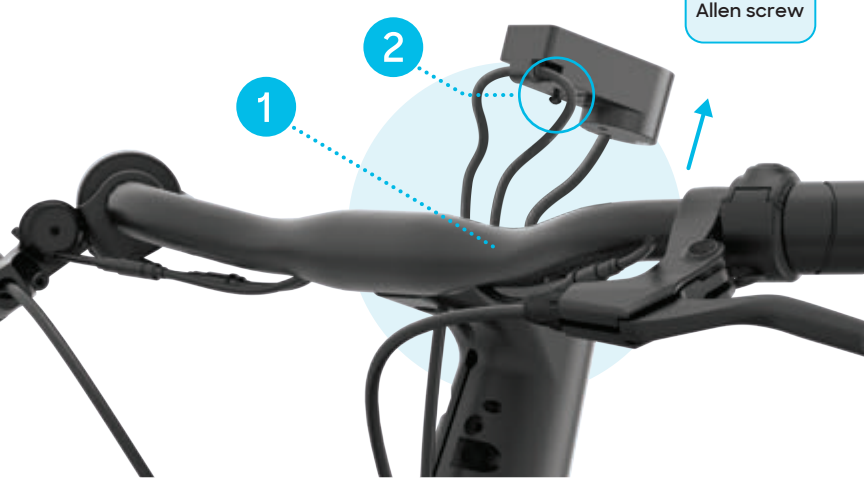
**Tip:** If the LED display doesn't pull out easily from the handlebar enclosure, use the 2.5mm Allen key to gently push it out through the screw hole from the back of the handlebar.

- 2 Remove the screw from under the LED display using the 2.5mm Allen key. Set aside the screw for use during installation in [step 11](#).

Tool required



Retrieve



## 7 Install the front wheel

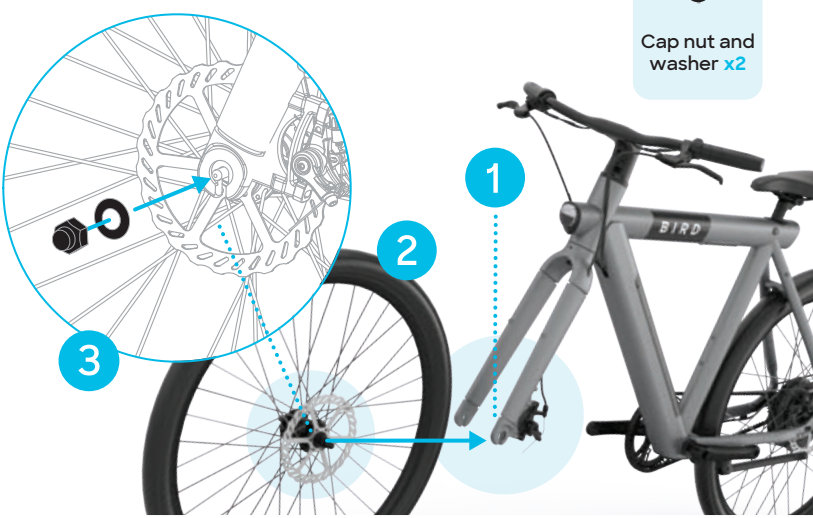
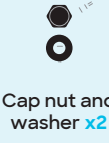
Attach the front wheel to the fork

- 1 Remove the black fork protector from the bottom of the fork and discard.
- 2 Insert the front wheel axle inside of the fork slots. Ensure the brake rotor is aligned to fit inside the front disc brake.
- 3 Install washers (serrated side in) and cap nuts onto the outsides of the fork. Tighten them using the 15mm wrench until secure.
- 4 The correct tire pressure is 50-80 psi.

Tool required



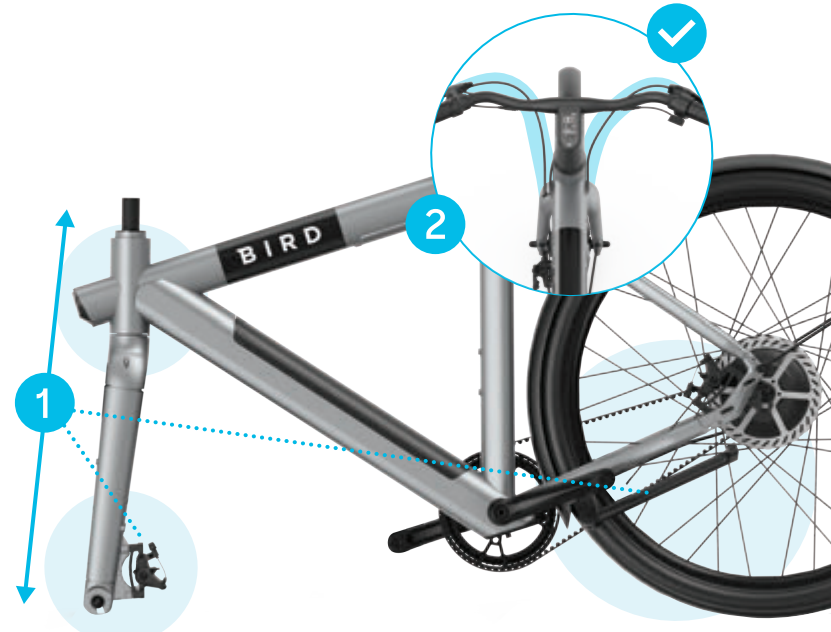
Parts required



## 4 Install the handlebars

Aligning the front fork (before mounting the handlebars)

- 1 Align the fork with the frame so that it is facing forward, **the front brake assembly should be on the same side as the kickstand.** (rider's left side)
- 2 Make sure the cables are clear and do not restrict the range of motion needed for steering.



## 5 Attach the handlebars

Attaching the handlebar to the handlebar stem on top of the fork

- 1 Place the handlebar over the handlebar stem and insert the hex bolt (from [step 2](#)) through the handlebar.
- 2 Using the 5mm end of the Y-wrench, gently tighten the hex bolt so that there's no play between the fork and frame.

Tool required



Retrieve



## 8 Attach the front fender

Attach the front fender to the fork

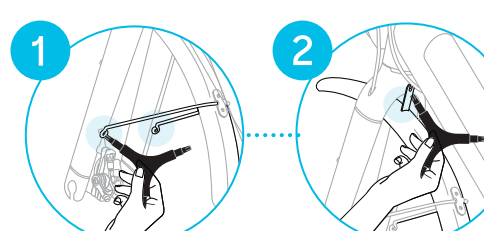
- 1 With the 4mm end of the Y-wrench, remove the two screws attached to the back of the fork.
- 2 Use the 4mm end of the Y-wrench to remove the screw that's on the top of the backside of the fork.

**Re-insert the two screws through the holes at the end of the fender-support bracket to secure them on to the fork.**

**Re-insert the screw through the fender mount bracket on top of the fender and secure tightly to the back of the fork.**

**Tip:** Make sure fender is parallel to the wheel so it doesn't make contact as the wheel rotates.

Tool required

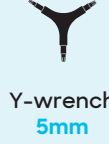


## 9 Install the seat

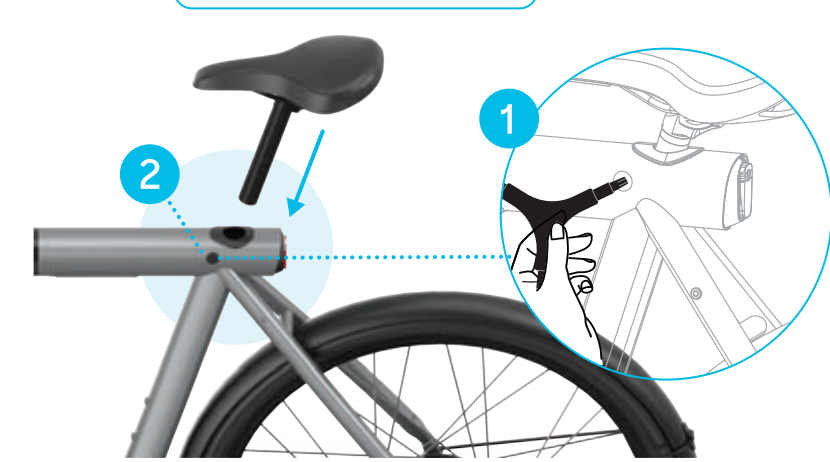
And adjust the seat height

- 1 Remove the soft rubber cap located on the frame just below the seat column to reveal the seat clamp screw.
- 2 Use the 5mm end of the Y-wrench to loosen the seat clamp screw. Adjust the seat post to the preferred height. Once positioned, tighten the seat clamp screw until secure and return the rubber cap in to the frame.

Tool required



Do not extend the seat post farther than the minimum insertion line indicated on the seat post.

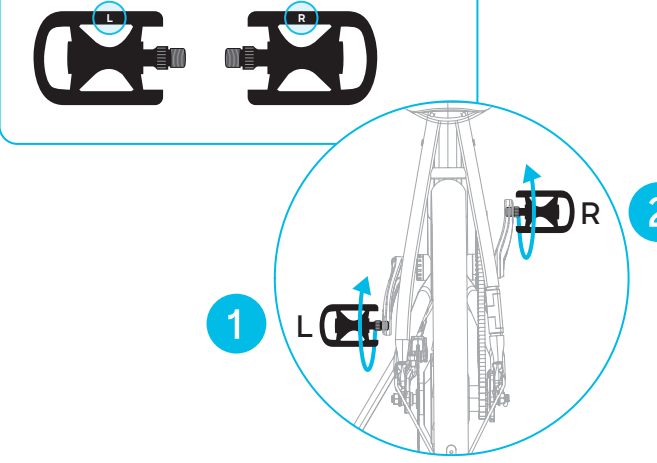


## 10 Install the pedals

Attach the pedals

- 1 Screw the left pedal marked "L" counter-clockwise by hand (since it is reverse threaded).
- 2 Screw the right pedal marked "R" clockwise.
- 3 Tighten both pedals with the 15mm wrench.

Each pedal is marked with an "L" or "R" corresponding to appropriate side (left or right) on the bolt end and on the inside of the pedal. See below illustration.



Tool required



## 11 Reinstall the LED display

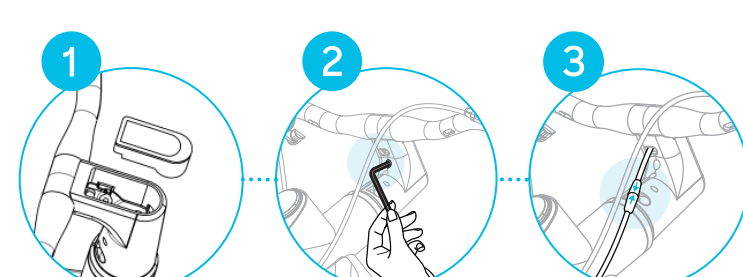
Reinstall the display

- 1 Place the display back into the handlebar enclosure. Be careful not to pinch the cables.
- 2 Use the 2.5mm Allen key, reinstall the screw previously removed in [step 3](#) from under the display, so that the display fits flush inside of the handlebar enclosure.
- 3 Connect the end of the power cable coming from the bottom of the display to the power cable coming out of the bottom of the frame. Carefully align the arrows on the cables.

Tool required



Retrieve



## 12 Charge battery

- 1 **Connect the charger**  
Use the included power supply and connect it to the charging port on the battery (below the +/- rubber flap).

**Finish Charging**  
When fully charged, a green light on the power supply indicates the charge is complete. Battery can be charged on the Bike or removed for charging. **Please allow 4-6 hours to fully charge your bike.**

**Tip:** Use keys to unlock and charge battery.



## 13 Install reflectors

- 1 **Rear reflector - red**  
Wrap the bracket for the rear reflector around the seat post. Secure with a flathead screwdriver. Position the reflector facing rearward.
- 2 **Front reflector - white**  
Wrap the bracket for the front reflector around the handlebar near the stem. Secure with a flathead screwdriver. Position the reflector facing forward.

Tool required



- 3 **Wheel reflectors**  
Wrap the bracket for the wheel reflector around any wheel spoke. Secure with a flathead screwdriver.

## 14 Bird app

- 1 Download the latest version of the Bird app and sign in or create a new account.



- 2 Press the power button on the left handlebar to turn on your Bird Bike.
- 3 Open up the Bird app and scan the QR that's on the lid inside of the toolbox to pair.
- 4 After pairing, the My Bird Bike screen will appear. This is where you can view the details of your Bird Bike and use the available features.
- 5 After closing the Bird app, access the My Bird Bike Screen through "Private Birds" in the menu.

## 2 Prep the handlebar stem

Remove the hex bolt, cap, and cardboard tube from handlebar stem

- 1 Remove the hex bolt screw from the cardboard tube on the handlebar stem. Set aside the hex bolt for use during installation in [step 5](#).
- 2 Discard both the cardboard tube and the black cap held in by the hex bolt.

Tool required



Set aside

